



SAP

PPP

tutorialspoint

SIMPLY EASY LEARNING

www.tutorialspoint.com



<https://www.facebook.com/tutorialspointindia>



<https://twitter.com/tutorialspoint>

About the Tutorial

SAP Production Planning is one of the key modules in ERP and deals with planning processes, such as capacity planning, material planning, execution of production order, bill of material and goods movement.

This tutorial explains the key concepts of SAP Production Planning (SAP PP). Important components of SAP PP such as BOM, Work Center, Data Center, etc. are explained in this tutorial.

Audience

This tutorial is designed for all those who want to learn the basics of SAP Production Planning. It is especially useful for managers involved in the production and manufacturing department.

Prerequisites

The course is designed for beginners with little or no knowledge of SAP PP. But you need to have a preliminary understanding of SAP Basics to make the most of this tutorial.

Disclaimer & Copyright

© Copyright 2018 by Tutorials Point (I) Pvt. Ltd.

All the content and graphics published in this e-book are the property of Tutorials Point (I) Pvt. Ltd. The user of this e-book is prohibited to reuse, retain, copy, distribute or republish any contents or a part of contents of this e-book in any manner without written consent of the publisher.

We strive to update the contents of our website and tutorials as timely and as precisely as possible, however, the contents may contain inaccuracies or errors. Tutorials Point (I) Pvt. Ltd. provides no guarantee regarding the accuracy, timeliness or completeness of our website or its contents including this tutorial. If you discover any errors on our website or in this tutorial, please notify us at contact@tutorialspoint.com.

Table of Contents

About the Tutorial	i
Audience	i
Prerequisites	i
Disclaimer & Copyright	i
Table of Contents	ii
1. SAP PP - INTRODUCTION	1
Key Steps in Production Execution	1
Convert Planned Order to Production Order	1
Issue the Production Order	1
Issue Goods for Production Order	1
Production Order Confirmation	2
Good Receipts w.r.t Production Order	2
2. SAP PP - COMMON TABLES	3
For Material Requirement Planning	3
For Demand Management	3
For Planned Orders	3
For Repetitive Manufacturing	3
How to View SAP PP Tables in SAP ERP System?	4
3. SAP PP - ORGANIZATION STRUCTURE	6
4. SAP PP - INTEGRATION WITH OTHER MODULES	7
SAP PP and SAP MM	7
SAP PP and SAP SD	7
SAP PP and SAP FICO	7
SAP PP and Project System	7
SAP PP and Quality Management	7

5.	SAP PP - MASTER DATA.....	8
	Bill of Materials	8
	Material Master	9
	Work Center	10
	Routing	12
6.	SAP PP - BILL OF MATERIALS	13
	Characteristics of BOM	13
	How to Create BOM?	13
	How to Display BOM?	18
	Types of BOM	19
	Material BOM	19
	Sales Order BOM.....	19
7.	SAP PP - WORK CENTER	20
	How to Create a Work Center?	20
	How to Change or Display Work Center?	25
	How to Display Work Center?	27
8.	SAP PP - ROUTING.....	28
	Key Features Related to Routing	28
	How to Create Routing in PP?	28
	How to Change Routing in PP?	31
9.	SAP PP - DEMAND MANAGEMENT	33
	Planning Strategies	33
	Make-to-Stock Planning Strategy	33
	Make-to-Order Planning Strategy.....	33
10.	SAP PP - CREATING PIR.....	34
	How to Change and Delete PIR?	35

11.	SAP PP - MATERIAL REQUIREMENT PLANNING	37
	MRP Parameters	37
	Processing Key	37
	NetChange	37
	NetChange in Planning Horizon	37
	Regenerative Planning	37
	Scheduling	37
	Basic Scheduling	37
	Lead Time Scheduling	37
	Running MRP for All Products	38
	MRP Evaluation: Stock/Requirement List	41
12.	SAP PP - MRP LIST	43
13.	SAP PP - LONG TERM PLANNING.....	44
	Key Objectives of Long Term Planning	44
	Creating an Inactive Version PIR	44
	Creating Planning Scenarios	45
14.	SAP PP - PRODUCTION ORDERS	50
	Creating a Production Order Directly from Stock Requirement List	50
	Using Planned Order Number	50
	Without Referring the Planned Order	50
	Using Planned Order Number	52
15.	SAP PP - PRODUCTION ORDER CHANGE.....	53
16.	SAP PP - PRODUCTION ORDER CONFIRMATION.....	55
17.	SAP PP - CANCELING PRODUCTION ORDER.....	57
18.	SAP PP - CAPACITY PLANNING.....	58
	To Check Capacity Loads	58
19.	SAP PP - CAPACITY LEVELING	61

20.	SAP PP - GOODS RECEIPT	63
	Creating Goods Receipt	63
21.	SAP PP - STOCK OVERVIEW	65
22.	SAP PP - GOODS ISSUE	67
23.	SAP PP - GOODS ISSUE REVERSAL	69
24.	SAP PP - LEAN MANUFACTURING	70
25.	SAP PP - REPORTS	71
	Key Reports in SAP PP	71
	Displaying Order Information Systems	71
26.	SAP PP - MATERIAL DOCUMENT LIST	74
27.	SAP PP - STOCK OF MULTIPLE MATERIALS	75
28.	SAP PP - LIST IN BILL OF MATERIAL	76

1. SAP PP – Introduction

SAP Production Planning is one of the key modules in ERP and deals with planning processes, such as capacity planning, material planning, execution of production order, bill of material and goods movement. SAP PP module handles the master data required for Bill of Materials (BOMs) activity, work center and routing, and keeps it in a separate component.

SAP PP submodules vary as per industry type like discrete production, repetitive production, or production industries.

Discrete production is an industry where produce materials change with each lot and costs are calculated as per orders and lots.

In **repetitive production**, the product is not changed for a long period of time. Production takes place in total quantity and not in the form of individual lots.

For most of the industry types, above-mentioned planning and execution submodules are commonly used. Before the production execution, many steps are performed as a part of the planning process:

- **Material Requirement Planning** (MRP) run (More details later in this tutorial).
- Bill of material and routing master data is entered in a planned order automatically with MRP run.
- Planning quantities are maintained in the system.

Key Steps in Production Execution

Following are the key steps in executing a production order. It starts with a planned order and ends with goods receipt against a Production order.

Convert Planned Order to Production Order

The first step is to convert a planned order to production order. When you create a production order, type is defined in SAP PP system.

Issue the Production Order

To start the production process, it is necessary to issue production order. Till a production order is released, execution of the production process cannot start.

Issue Goods for Production Order

To execute the production order, goods need to be issued. Once goods are issued, the document number can be updated in the system.

Production Order Confirmation

All the sub processes are executed in accordance with the required operations to confirm the production as per the production order.

Good Receipts w.r.t Production Order

Once the execution of production order is complete, goods produced w.r.t production order are received and placed in the storage area.

2. SAP PP – Common Tables

In this chapter, we will discuss some of the important tables in SAP PP.

For Material Requirement Planning

Table	Description
MDKP	Document Header data
MDTB	Table Structure
MDVM	Planning File Details
MDFD	MRP Date details
S094	Stock Analysis

For Demand Management

Table	Description
PBED	Independent Requirements Data
PBIM	Independent Requirements by Material

For Planned Orders

Table	Description
PLAF	Planned Order Details

For Repetitive Manufacturing

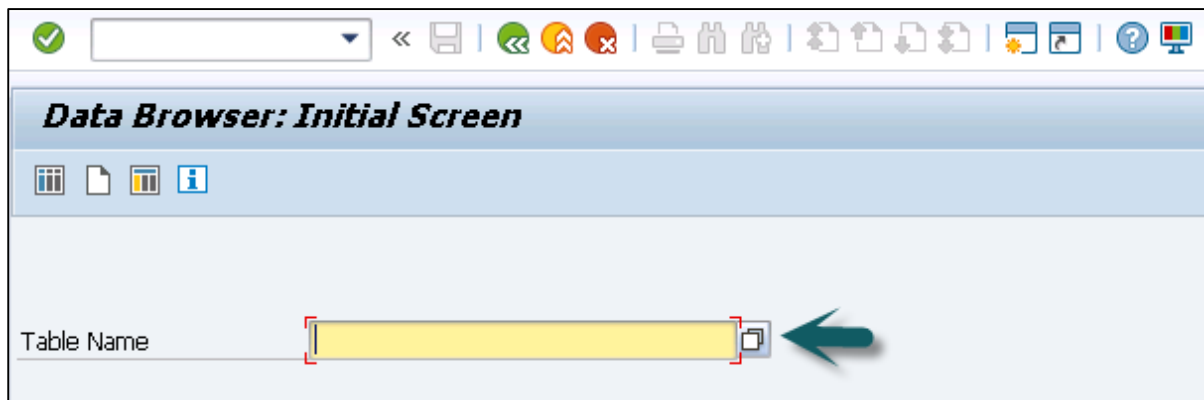
Table	Description
S025	Run Schedule Quantities
S026	Material Usage
S028	Reporting Point Statistics
SAFK	RS Header Master Data

There are various tables in SAP PP system for BOM, routing, discrete production, material allocation, goods receipts, etc.

Table	Description
MAST	Material BOM
STKO	BOM Header
STOP	BOM Positions
PLKO	Routing Group Header
PLSO	Routing Group Sequence
PLPO	Routing Group Operations
AFKO	Production Order Header
AFPO	Production Order Position

How to View SAP PP Tables in SAP ERP System?

Step 1: In ERP system, use T-Code: SE16.



Step 2: Go to SAP Applications.

Table	Short description
DMC_ACCESS_PLAN	DMC: WHERE clauses of an access plan
DMC_SELSTRING	Select strings
EKET	Scheduling Agreement Schedule Lines
FAGLFLEXT	General Ledger: Totals
IUUC_ASS_RUL_MAP	Assignment of Rules to Tables
MCO2M_OHDRSETUP	Storage BW Setup for MCO2M_OHDR
MCO2M_OITMSETUP	Storage BW Setup for MCO2M_OITM
MCO2M_OSCLSETUP	Storage BW Setup for MCO2M_OSCL
MC11VAOHRSETUP	BW Reorganization Store for MC11VAOHR
Z517A	
Z9I_STK_MAIL_ADV	Generated Table for View
ZEMPLOYEE	employee details
ZEMP_TABLE	Employee Table
ZMATERIAL	Demo Tched
ZTT1	ZTT1

Step 3: Click the '+' sign and you can see the list of all tables in ERP as shown in the following screenshot.

Component View: Database Tables	
LE	Logistics Execution
QM	Quality Management
PM	Plant Maintenance
CS	Customer Service
PP	Production Planning and Control
ODATA_PP_SFC_PRODORDER_RELEASE	Backend Settings for Service prodorder.re
XLPO	Manufacturing: xLPO Integration
PP-BD	Basic Data
PP-SOP	Sales and Operations Planning
PP-MP	Production Planning
PP-CRP	Capacity Requirements Planning
PP-MRP	Material Requirements Planning
PP-MES	Integration with Manufacturing Execution
PP-SFC	Production Orders
PP-KAB	KANBAN
PP-REM	Repetitive Manufacturing
PP-PI	Production Planning for Process Industrie
PP-PDC	Plant Data Collection
PP-FLW	Flow Manufacturing
PP-IS	Information System
PP-PN	Production Network
PS	Project System
SCM	Supply Chain Management
EHS	Environment, Health and Safety

3. SAP PP – Organization Structure

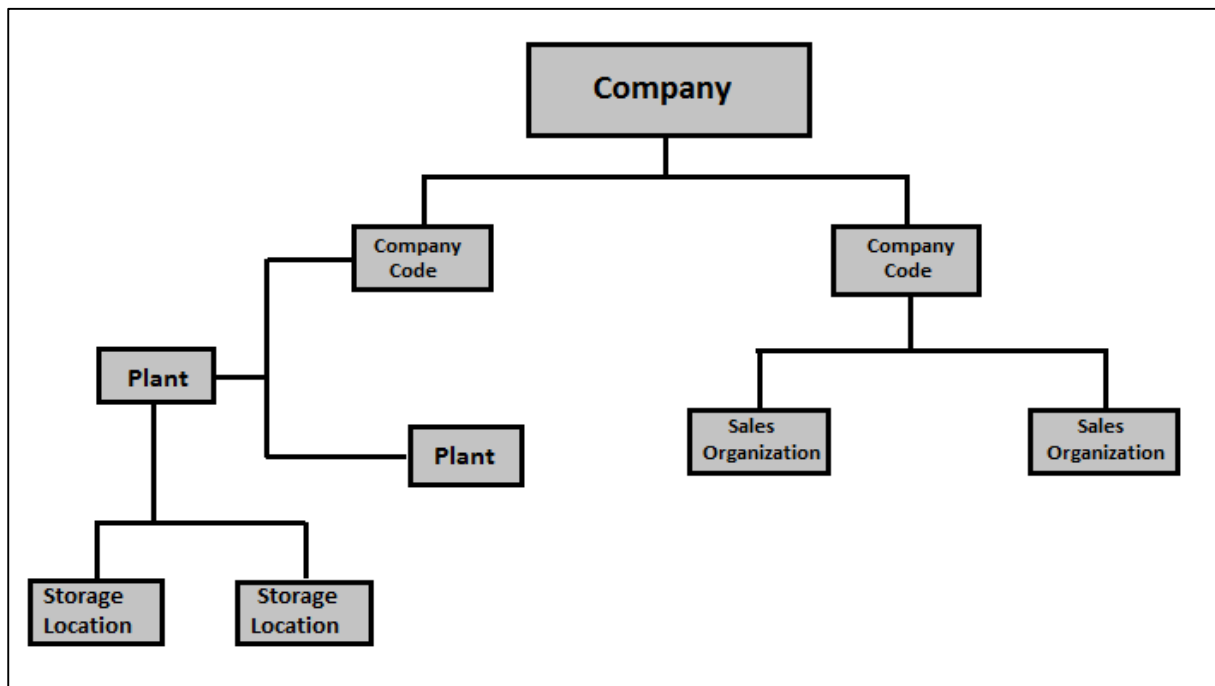
In SAP PP module, the organization structure defines the location of manufacturing plants and storage locations within the plant. At the top of the structure, you have the company and the company code and then each company code contains different plant and storage locations.

Following diagram represents a common organization structure in live SAP Production Planning environment.

All the planning activities are performed at the plant level.

Production master data in Production Planning is created at the plant level.

Production confirmation process and the movement of goods occur at the plant and storage level.



4. SAP PP – Integration with Other Modules

To perform Production Planning and Control activities, SAP PP is closely integrated with other SAP ERP modules: SAP Sales and Distribution (SD), SAP Material Management (MM), Quality Management, Finance Accounting, and Project System.

You can find a list of the following activities from Production Planning that are related to other SAP modules and integration with other modules.

SAP PP and SAP MM

- This involves movement of goods, auto goods receipt.
- It includes creating a reservation for Production Order/Planning.
- Raising purchase orders with MRP Run.
- Quotations and Vendor selection.

SAP PP and SAP SD

- This is used to check the availability of material for production order.
- To perform MRP Run, Requirement Types.
- Bill of Material components and operation.

SAP PP and SAP FICO

- Updating price in material master data.
- Defining activity type in the cost center.
- Assigning activity type to work center.
- Cost Estimation.
- Production cost controlling
- Posting accounting activities related to goods movement, material request, etc.

SAP PP and Project System

- Assigning planning activities to WBS in the Project.
- Running Material requirement planning at Project level (MD51). The procured material attached to WBS are reserved as project stock against the particular project.
- The component attached to the network are planned at the plant level and are reserved as plant stock.

SAP PP and Quality Management

- Inspection Type 03 for discrete and repetitive manufacturing.

- Inspection Type 04 for both discrete and repetitive manufacturing.

5. SAP PP - Master Data

Master data contains the main detailed objects in SAP Production Planning module. In SAP PP, main objects are Bill of Materials, material master, routing, and work center. Master data contains the key properties of these objects such as production order, material type, planning requirements, goods issue, and goods receipt.

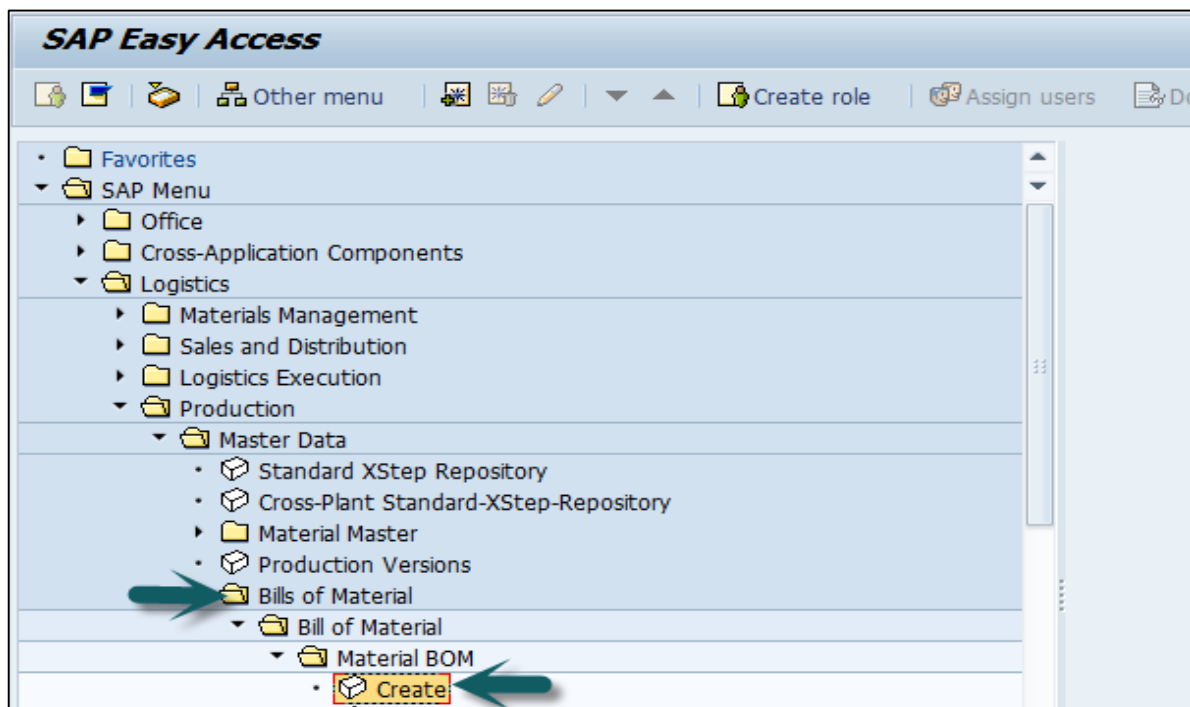
Following are the types of master data that exists in PP:

Bill of Materials

Bill of materials master data is related to material requirement planning and provides the list of components to produce the product.

To produce a product with different variants, you can create super Bills of Material that has a list of components to manufacture different variants of a product. Selection of component depends on the details mentioned in the planning order. You can create up to 99 Bills of Material.

For Bills of Material master, use T-Code: CS01 or go to Logistics -> Production -> Master Data -> Bills of Material -> Bills of Material -> Material BOM -> Create



Select the following details:

- Material
- Plant
- BOM usage (usage 1 is production)

Create material BOM: Initial Screen

Create variant of...

Material: 100-510
 Plant: 0005
 BOM Usage: 1
 Alternative BOM:

Validity

Change Number:
 Valid From: 19.06.2016
 Revision Level:

BOM Usage (1) 8 Entries found

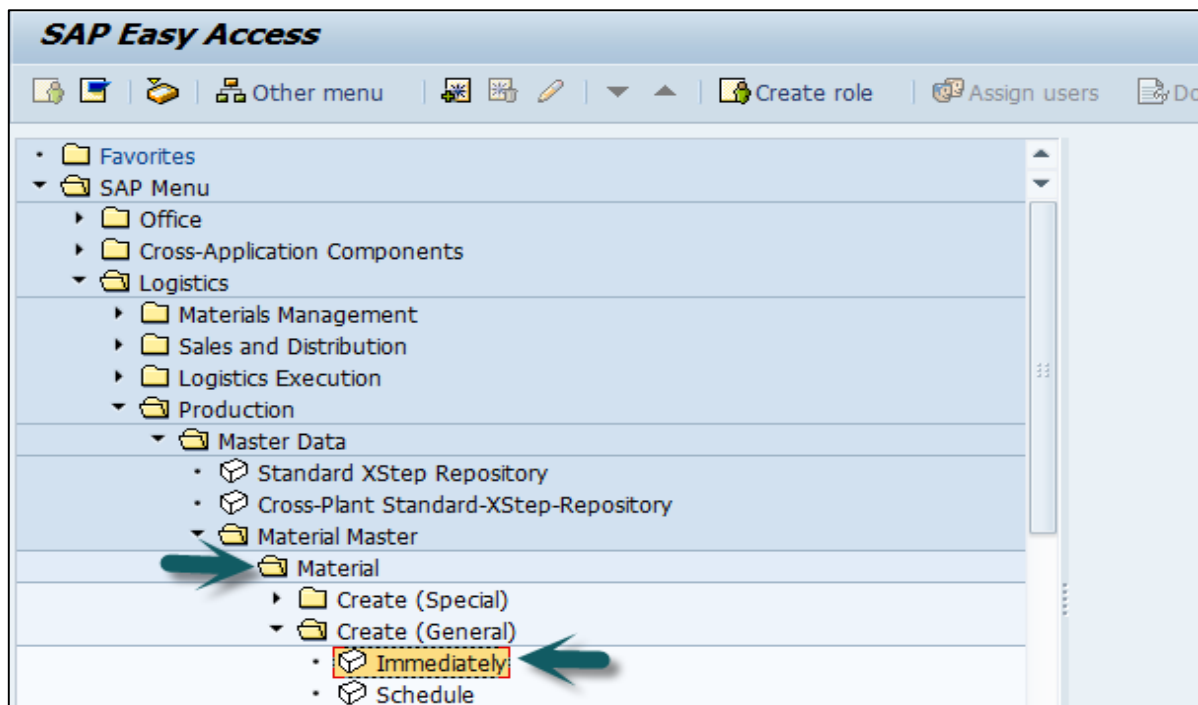
Restrictions

Usa...	Pro...	Eng/d...	P...	Spa...	Cost...	Sal...	Usage text
1	+	Production
2	.	+	Engineering/design
3	Universal
4	.	.	+	.	.	.	Plant maintenance
5	+	Sales and distribution
6	+	.	Costing
7	Returnable Packaging
8	Stability Study

Material Master

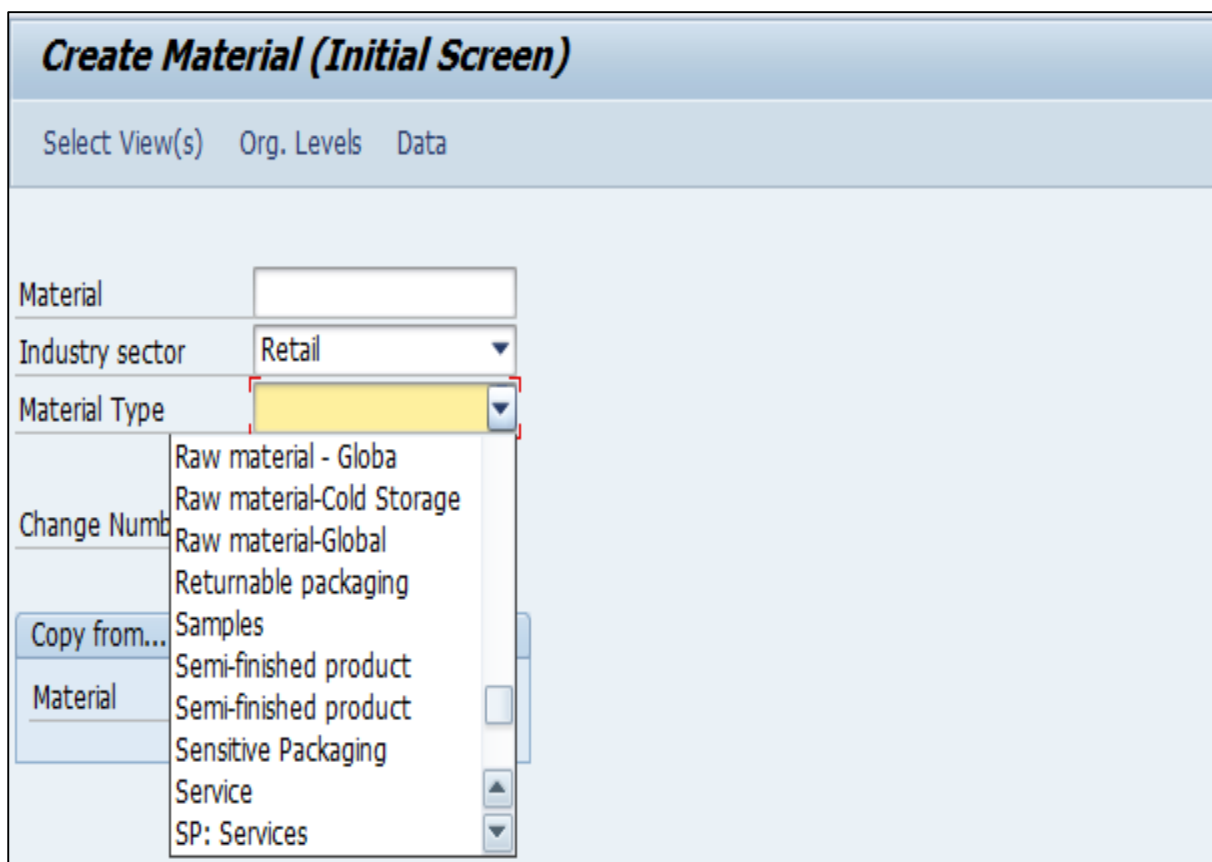
Material master contains information related to different material types like finished product, raw material. Material master can be used for identifying a product, purchase material, goods issue or good receipt, MRP, and production confirmation.

For Material master data, **use T-code: MM01** or go to Logistics -> Production -> Master Data -> Material Master -> Material -> Create (General) -> immediately



Enter the following details:

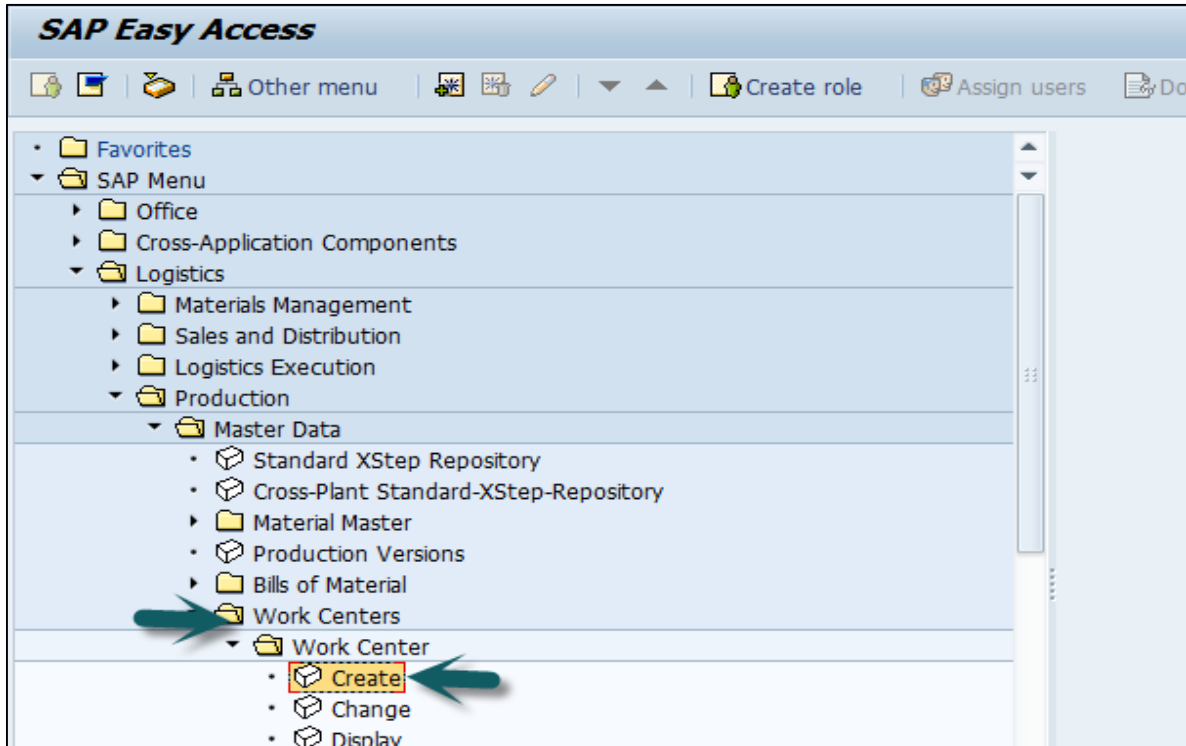
- Industry Sector
- Material Type



Work Center

Work center consists of master data related to routing of products. It contains data related to scheduling, capacity planning, and production costing.

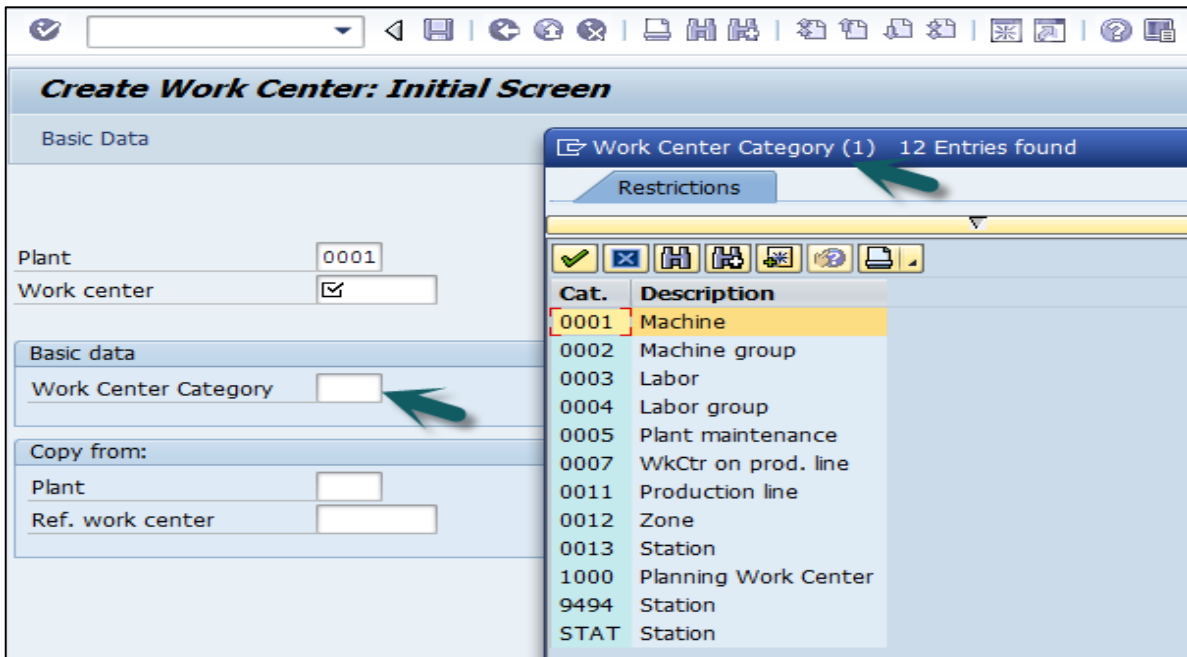
For work center, **use T-code: CR01** or go to Logistics -> Production -> Master Data -> Work Centers -> Work Center -> Create



Enter the following details:

- Work center name
- Plant name where work center is located

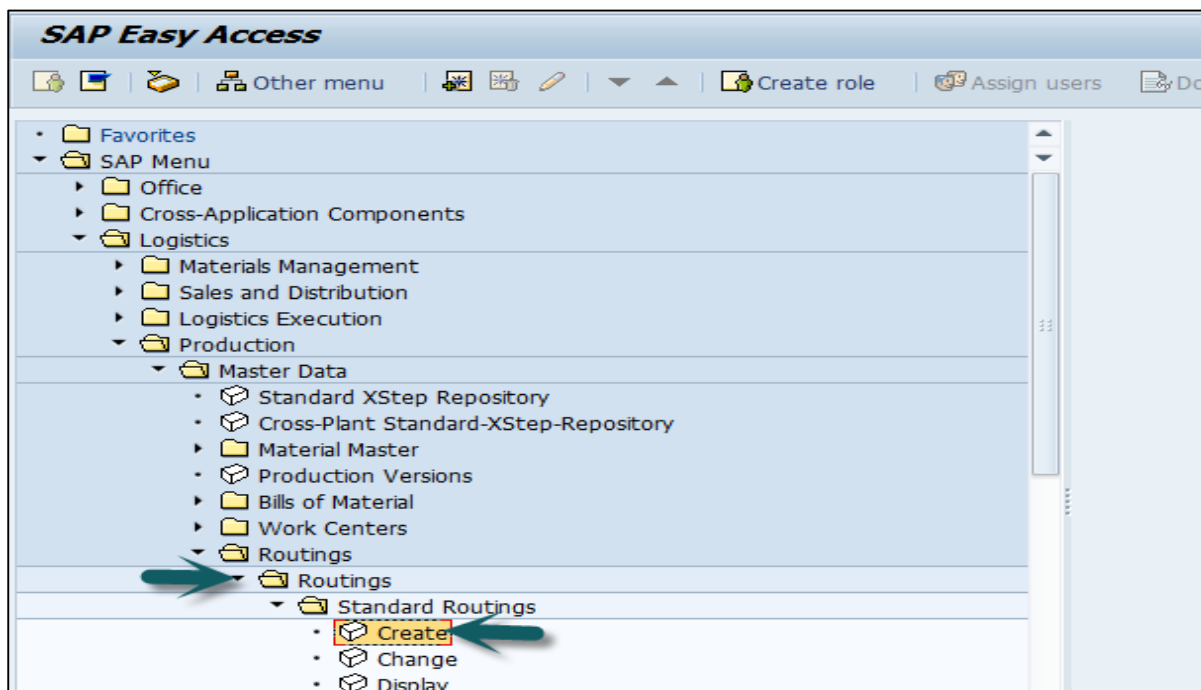
Select Work Center Category and click the tick mark.



Routing

Routing defines the sequence of activities performed at the work center. Routing plays an important role in calculating production cost, machine time, and labor time.

For Routing Master data, **use T-Code: CA01** or go to Logistics -> Production -> Master Data -> Routings -> Routing -> Standard Routing -> Create



Enter the following details:

- Material

- Plant

Click the tick mark.

Create Routing: Initial Screen

Copy from Routings Sequences Operations

Material	100-510	
Plant	0001	<input checked="" type="checkbox"/>
Sales Document		<input type="checkbox"/> Sales Document Item
WBS Element		
Group		
Validity		
Change Number		
Key date	19.06.2016	
Revision Level		
Additional data		
Profile		

End of ebook preview

If you liked what you saw...

Buy it from our store @ <https://store.tutorialspoint.com>